

# ANNUAL REPORT

2021



**HAMIDIYE  
FOUNDATION**



HAMIDIYE  
FOUNDATION

# AT A GLANCE 2020-2021

## ACTIVITIES



7 Halls of Residence



98 Waterwell Installation



150 Food Packages Distribution



3000 Iftar Meals



150 Eid Gift Packs



Meat distribution to 200 poor families

# About Hamidiye Foundation

---

## *CORPORATE DETAILS*

---

### **Incorporation**

Hamidiye Foundation is a public welfare and charitable trust registered in Pakistan under the Registration Act, 1908 of Pakistan as a trust conforming to the Trusts Act, 1882 of Pakistan. It was registered in Lahore on September 15, 2018.

### **Trustees**

Hamidiye Foundation is governed by a Board of Trustees. There are seven members, three Pakistanis, three Turkish, and a US citizen.

### **Management**

Hamidiye Foundation is managed by a Chief Executive Officer who reports directly to the Chairman of the Board of Trustees. He is assisted by a small team of dedicated professionals who administer the trust. In addition to the administration staff, there is project staff who are based at each of the projects and report directly to each of the project managers.

### **Auditors**

Our auditors are: RSM Avais Hyder Liaquat Nauman, Chartered Accountants, located at Avais Chambers, 1-C/5, Sikander Malhi Road, Canal Park, Gulberg III, Lahore.

### **Legal Advisors**

Our lawyers and legal advisors are: Munir & Munir, Advocates & Legal Advisers, located at C1-16A, Hall Road, Gulberg II, Lahore,

### **Bankers**

Our main bankers are: Meezan Bank Limited, Gulberg Branch, 60 Main Boulevard Gulberg II, Lahore

### **Financial Record Keeping**

Hamidiye Foundation maintains strict financial discipline that ensures that income and expenditures relating to administration of the trust are kept separate from those relating to the implementation of its various projects and activities.

### **Operations Record Keeping**

Hamidiye Foundation maintains detailed records of operational activities it carries out to enable and strength its monitoring and evaluation function so that lessons from past efforts and results can feed into policy going forward.

---

## ***MAIN BUSINESS ACTIVITY***

---

Main business activity of Hamidiye Foundation during the year remained 'establishing and operating halls of residences to provide quality living and learning environment for students at greatly subsidized cost'.

Because we are a public charity, our main business activity is not undertaken for profit or for monetary gains. Our donors fund this activity because they want to help the underprivileged in the society get out of poverty by facilitating access to education for their children.

---

## ***OUR BUSINESS MODEL***

---

Our business model is designed to provide a loving and caring living environment for out of town students that promotes learning and quest for knowledge. Most of our students come from families that live in areas where there is no easy access to schools or cannot provide a conducive learning environment at home where children can focus on studies without distractions and obligations for household chores. By providing these facilities we endeavor to level the playing field so that our students can compete on equal footing with children who come from privileged backgrounds. Or success in doing it well, is what earns us our donor's confidence and their continued funding of our activities and their moral support.

Our halls of residence also provide residents a unique opportunity to learn Islamic values and live their lives by those values as they pursue their education in schools, colleges, and universities of their choice.

We are currently operating three types of residential facilities;

**01** halls of residence for students attending an external middle school

**02** halls of residence for students attending an external high school

**03** halls of residence for students enrolled in our two year 'high school preparation' program.

This program is for middle school students who want to spend first two years doing Hifz-e-Quran and preparing for high school studies, before enrolling in an external high school for Matriculation exams. In the coming years we also plan to open halls of residence for college and university students.

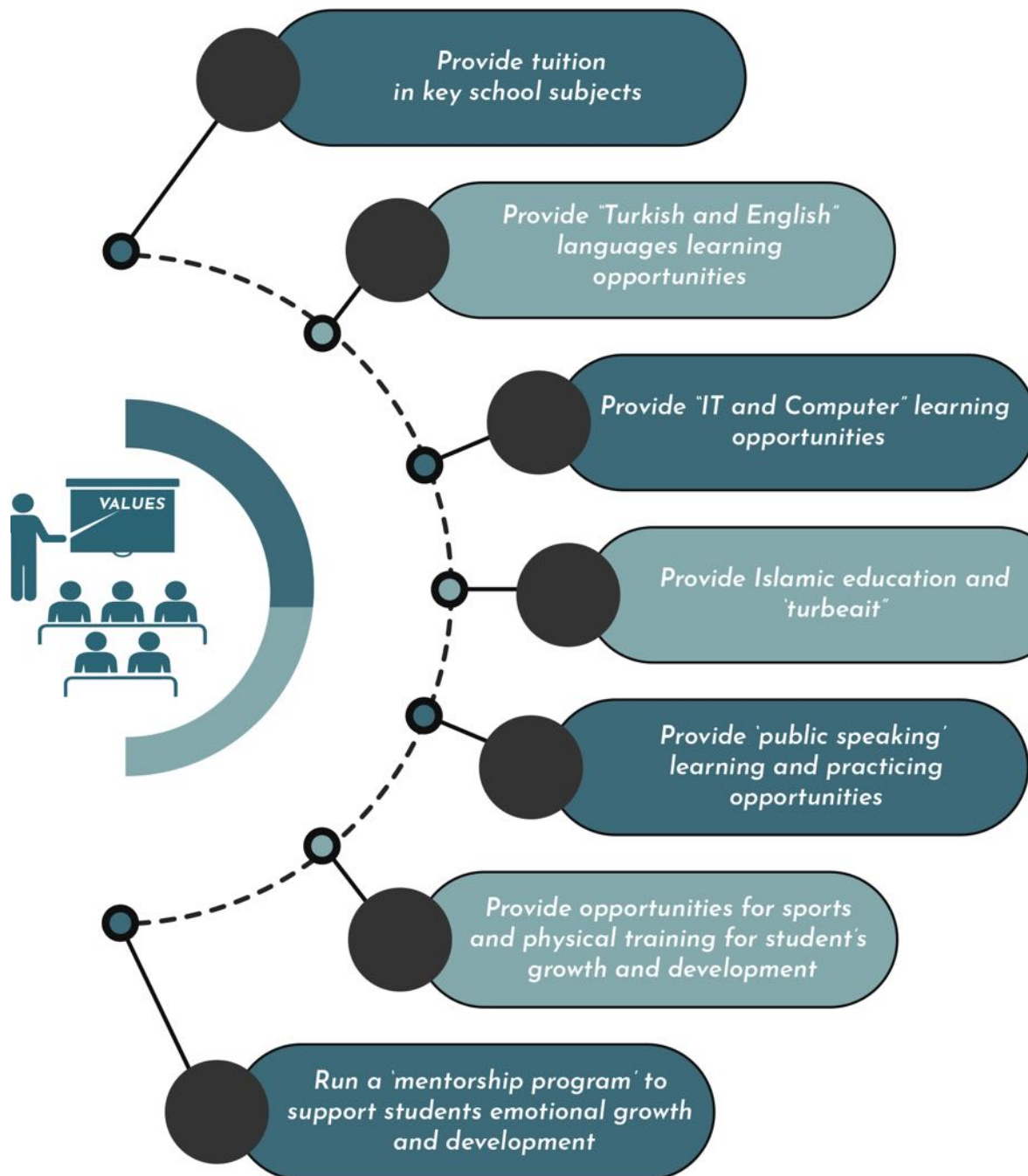
### Scholarships

In addition to providing greatly subsidized boarding and lodging facilities, we also provide scholarships for deserving residents to pay for their school or college fees and meet their other education related expenses.



## After-School Tuition

In those halls of residence that cater for middle and high school students, we also provide free 'after school tuition' mainly in key STEM subjects (science technology engineering and mathematics) to help our students excel in schools.



## Gender Equality

We support talented youth irrespective of gender. To provide similar residential facilities for Girls, we run separate halls of residence for girls. Girls have access to and enjoy the same facilities as are provided in Boys halls with special focus on meeting their specific needs.

## Mentorship

Most of our halls of residence also offer ‘mentorship programs’ where residents can opt to pair with a mentor who cares for their physical mental and emotional health and provides day to day support, inspiration, and motivation.



## OUR PARTNERS

Our business model is the same that Ipekyolu Asya, a Turkish Charity, has been implementing in Turkey and in several other countries for the past five or so decades. Proven success of this model is what motivated our trustees to partner with Ipekyolu Asya for its replication in Pakistan.

Under our partnership arrangement with Ipekyolu Asya, we have access to their technical and intellectual resources, systems, and staff training programs. We are allowed to offer short term secondment contracts to their staff to bring them to Pakistan to provide hands-on training to our professional and management staff and provide direct support to our students. Ipekyolu Asya also provides us financial and management support in the running of our halls as well as for other charitable activities that we undertake.





# Activities During the Year

## *'HALLS OF RESIDENCE' PROGRAM*

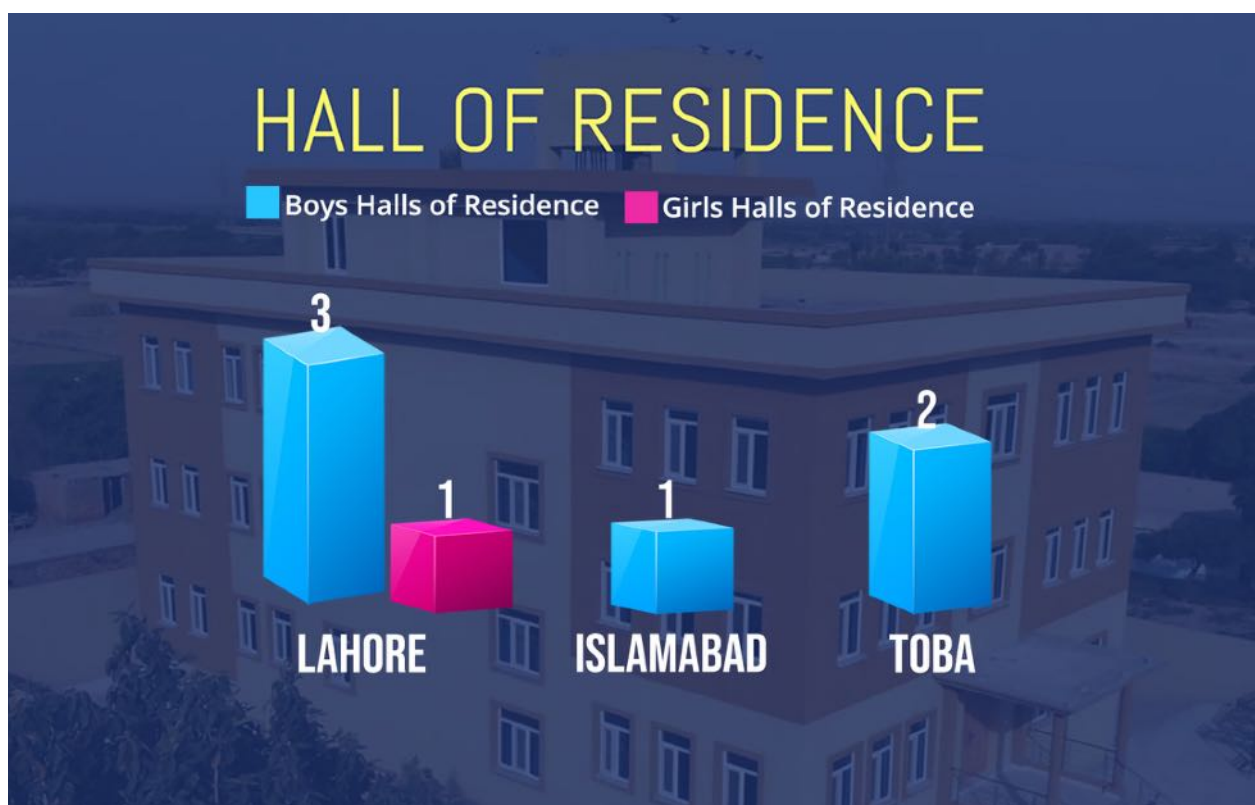
### *We established seven halls of residence during the year*

At the beginning of the year we had no Hall of Residence for students. But during the year we established seven Halls of Residence; four in Lahore, one in Islamabad, and two in Toba Tek Singh. These were;

1. Hall of Residence for Boys – Sector G15, Islamabad
2. Hall of Residence for Boys – TobaTek Singh
3. Hall of Residence for Boys – TobaTek Singh
4. Hall of Residence for Boys – Johar Town, Lahore
5. Hall of Residence for Boys – Thokar Niaz Baig, Lahore
6. Hall of Residence for Boys – Valencia Town, Lahore
7. Hall of Residence for Girls – Architects Society, Lahore

### *Six of these Halls are for Boys and One for Girls*

By the end of the year we had one Girls hall of residence operating in Lahore and we had six halls of residence for Boys, one in Islamabad, two in TobaTek Singh, and three in Lahore.



## TOTAL NUMBER OF RESIDENTS

*We had a total of 210 students staying in our Halls of Residence*

As at the end of the year there were a total of 210 students residing in our seven Halls of Residence. 113 residents were in Lahore, 29 in Islamabad, and 68 in Toba Tek Singh. 30 of these were Girls and 180 were Boys.

Most of the residents were enrolled in local Government Schools nearest to our halls of residence. We provide pick and drop service to those who might be enrolled in schools further away from their hall of residence.

## GIRLS HALLS OF RESIDENCE

14% of total residents (30) were Girls

60% of the Girls (18 Girls) were attending Middle School

40% of the Girls (12 Girls) were attending High School

## BOYS HALLS OF RESIDENCE

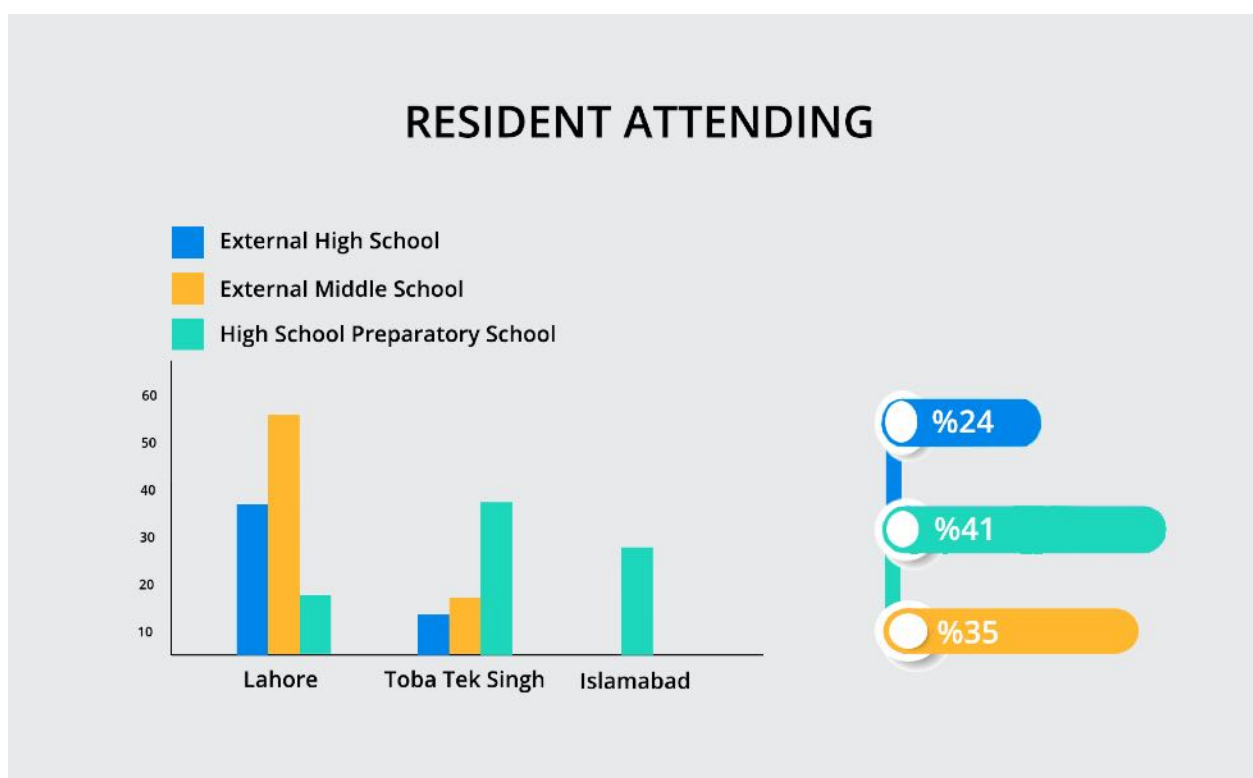
35% (73 Boys) were attending external Middle Schools

24% (51 Boys) were attending external High Schools

41% (86 Boys) were attending our in-house 'high school preparatory course'

## HIGH SCHOOL PREPARATORY COURSE

Our high school preparatory course admits middle school graduates and trains them for two years before enrolling them in public high schools.



Apart from refreshing and strengthening their middle school concepts, these students learn about Islam and those who are interested can join our two year Hifz-e-Quran course. Attendance of this two year preparatory course equips them with necessary skills habits and discipline that will see them succeed in their educational pursuits throughout life.

## ***FINANCIAL HIGHLIGHTS OF ‘HALLS OF RESIDENCE’ PROGRAM***

We spent PKRs20.9 million during the year operating these seven halls.

Donations for this program came from both local and overseas

We raised a total of PKRs32.1m in donations during the year.

Donations received for this program are treated as donations to a restricted fund.

Following table shows movement during the year on Halls of Residence Operations Fund.

<b>Movement on ‘Hostel Operations Fund’ During YE June 30,2021</b>	
	<b>PKRs</b>
Balance as July 1,2020	<b>705,979</b>
Contributions Received During the Year	<b>34,030,223</b>
	<b>34,706,202</b>
LESS: Disbursements During the Year	<b>21,031,808</b>
Balance as at June 30, 2021	<b>13,704,394</b>

# Our “Clean Water” Program



Our clean water program is currently focused on ‘making clean drinking water available to children in schools’. We are installing water pumps in schools where children do not have easy access to clean drinking water within the school premises.

## **Our Methodology**

We work with local Department of Education in districts we have chosen to work in to identify schools in need of clean water facilities. We then meet and work with Headmasters and Headmistresses of targeted schools to confirm the need and to identify and nominate a project coordinator form amongst teachers who will work with us during installation process and subsequently shall be responsible for maintaining the system. With the help of school management a location is selected and our installation team comes into action.

Each installation is comprised of a hand pump, an electric pump, and a water storage tank with taps to ensure that water is available when needed. We have adopted a standard design and we have carefully selected equipment that we use as standard at each site.



Toba Tek Singh

The installation is carried out by a team of installers who have been specially trained by us to strictly comply with our technical specifications and standards when building the facilities.

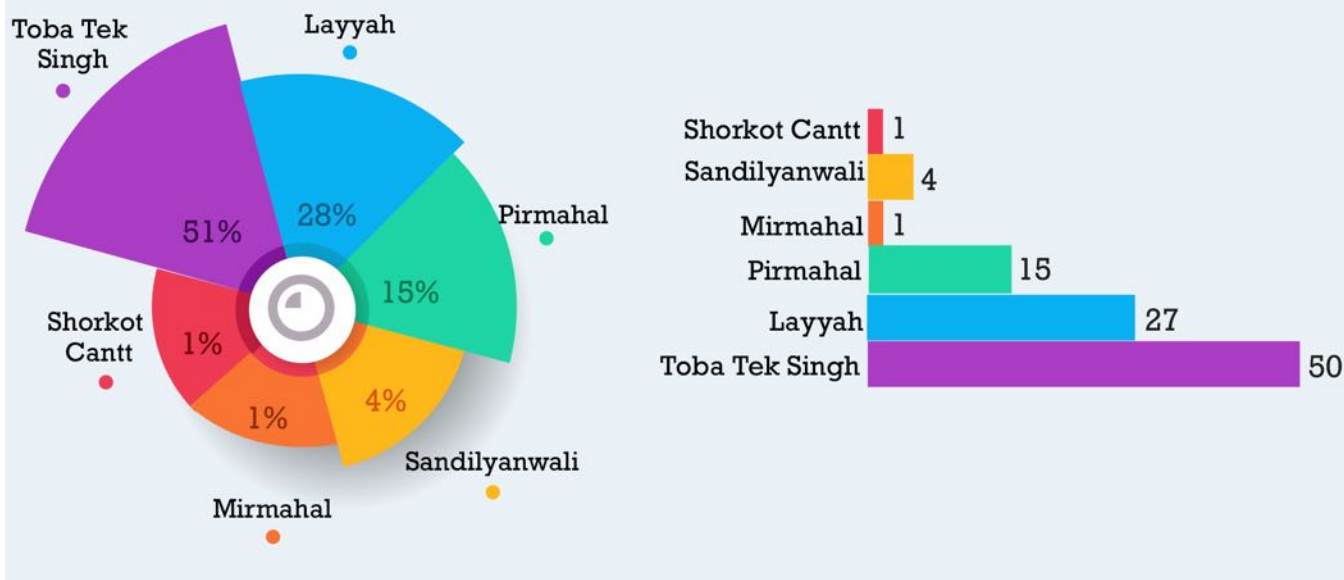
All installations during the year were in schools that had existing electricity connections that enabled us to install electric pumps to fill the tanks for round the clock water availability.

## RESULTS ACHIEVED DURING THE YEAR

### *We installed 98 water pumps in 6 Districts in Punjab*

During the year we solely worked in Punjab. 51% of our installations were in Toba Tek Singh area schools, 28% in Leyyah, and 15% in Pirmahal. A few installations were also done in Sandilyanwali, Pirmahal, and Shorkot area schools.

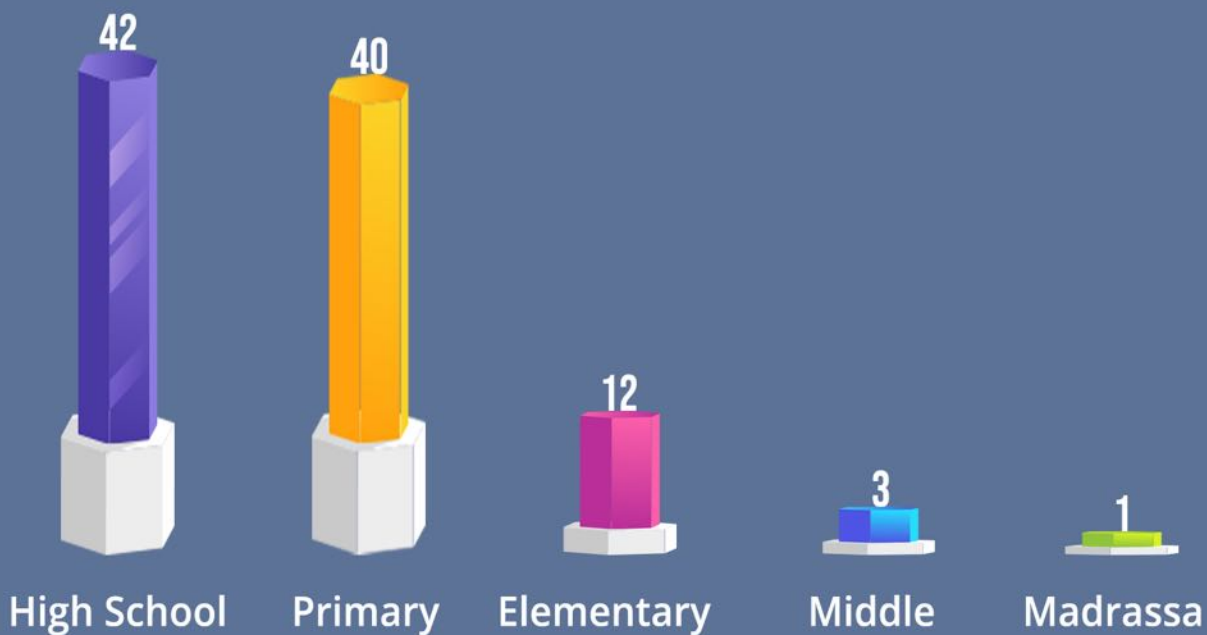
# Clean Water Facilities Installation



## Most of the installations were in High Schools

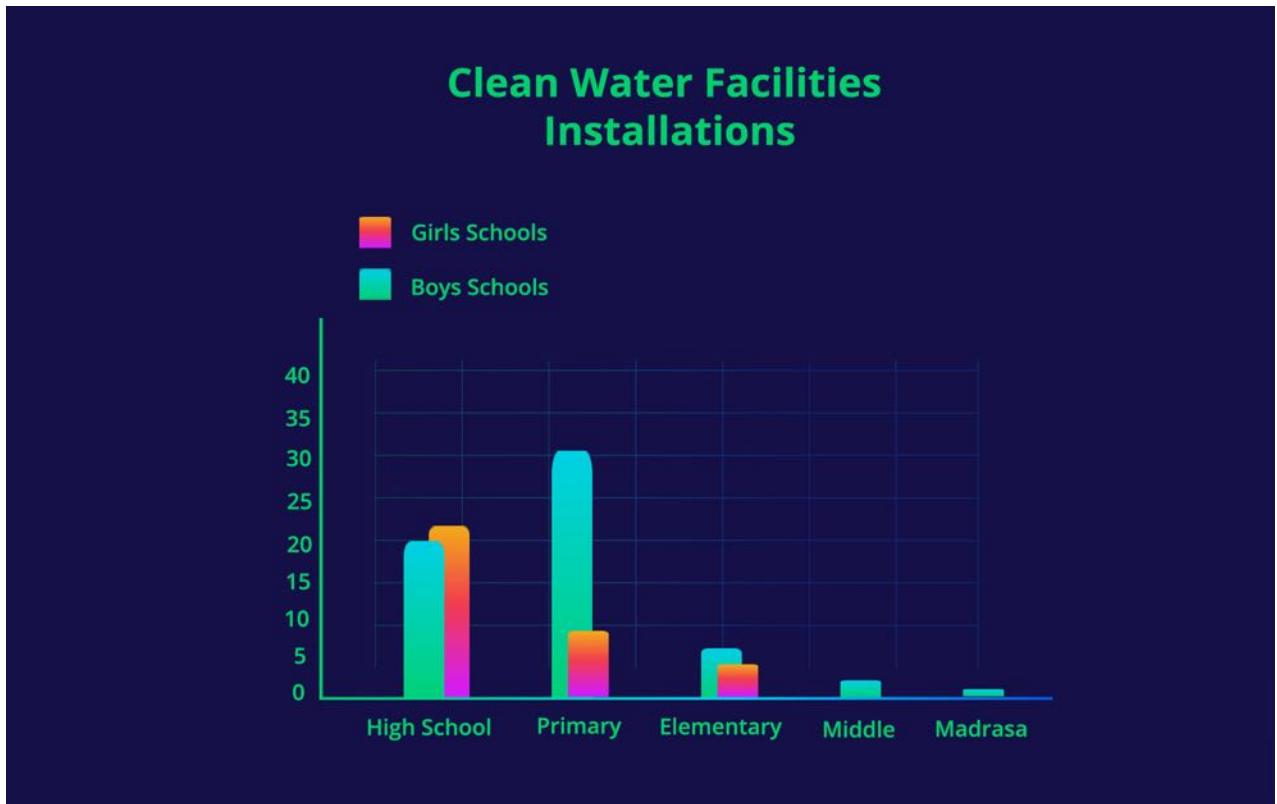
High schools received most of clean water installations (42), followed by Primary schools (40) and elementary schools (12). Middle schools received only 3 installations and a Madrassa received one.

# Clean Water Facilities Installations



### *Most of the installations were in Boys schools*

62 installations were in Boys schools of which 31 were in boys primary schools, 20 in boys high schools, 7 in boys elementary schools, 3 in boys middle schools, and one in a boys Madrasa.



36 installations were in girls schools of which 22 were in girls high schools, 9 in girls primary schools, and 5 in girls elementary schools.



# Project Locations

*Pumps were installed in following schools;*

List of All Water Pumps Installed During Year Ended June 30, 2021							
ID er	City	Installation Address	School Name	Primary/Middle/High	Boys/Girls/Mixed	Type of Pump - Hand or Electric	Storage Tank V
	TOBA TEK SINGH	359 GB GBES T1S	GOVERNMENT BOYS ELEMENTRY SCHOOL	Elementary	Boys	HAND and ELECTRIC	YES
	TOBA TEK SINGH	359 GB GGHS TTS	GOVERNMENT GIRLS HIGH SCHOOL	High School	Girls	HAND and ELECTRIC	YES
	TOBA TEK SINGH	519 GB GBHS TTS	GOVERNMENT BOYS HIGH SCHOOL	High School	Boys	HAND and ELECTRIC	YES
	TOBA TEK SINGH	519 GB GHS GIRLS TTS	GOVERNMENT GIRLS HIGH SCHOOL	High School	Girls	HAND and ELECTRIC	YES
	TOBA TEK SINGH	GPS GIRLS TTS	GOVERNMENT GIRLS PRIMERY SCHOOL	Primary	Girls	HAND and ELECTRIC	YES
	TOBA TEK SINGH	293 JB GPS BOYES TTS	GOVERNMENT BOYS PRIMERY SCHOOL	Primary	Boys	HAND and ELECTRIC	YES
	TOBA TEK SINGH	149 GB GES BOYES TTS	GOVERNMENT BOYS ELEMENTRY SCHOOL	Elementary	Boys	HAND and ELECTRIC	YES
	TOBA TEK SINGH	149 GB GHS GIRLS TTS	GOVERNMENT GIRLS HIGH SCHOOL	High School	Girls	HAND and ELECTRIC	YES
	TOBA TEK SINGH	151 GB GHS BOYES TTS	GOVERNMENT BOYS HIGH SCHOOL	High School	Boys	HAND and ELECTRIC	YES
	TOBA TEK SINGH	152 GB PRIMARY SCHOOL BHNDIYAN	GOVERNMENT PRIMERY SCHOOL	Primary	Mixed Gender	HAND and ELECTRIC	YES
	TOBA TEK SINGH	GBHS CHAK NO 295 JB DAVIDAS	GOVERNMENT BOYS HIGH SCHOOL	High School	Boys	HAND and ELECTRIC	YES
	MIRMAHAL	GBHS 673/14 HASABAD	GOVERNMENT BOYS HIGH SCHOOL	High School	Boys	HAND and ELECTRIC	YES
	PIRMAHAL	673/14 GB GHS BOYES MIRMAHAL TTS	GOVERNMENT BOYS HIGH SCHOOL	High School	Boys	HAND and ELECTRIC	YES
	PIRMAHAL	673 14 GB GHS GIRL MIRMAHAL TTS	GOVERNMENT GIRLS HIGH SCHOOL	High School	Girls	HAND and ELECTRIC	YES
	PIRMAHAL	GBHS CHAK NO 685/26	GOVERNMENT BOYS HIGH SCHOOL	High School	Boys	HAND and ELECTRIC	YES
	PIRMAHAL	685/26 GB GHS BOYES MIRMAHAL TTS	GOVERNMENT BOYS HIGH SCHOOL	High School	Boys	HAND and ELECTRIC	YES
	PIRMAHAL	GBPS CHAK NO 684/25	GOVERNMENT BOYS PRIMERY SCHOOL	Primary	Boys	HAND and ELECTRIC	YES
	PIRMAHAL	GBHS CHAK NO 683/24	GOVERNMENT BOYS HIGH SCHOOL	High School	Boys	HAND and ELECTRIC	YES
	PIRMAHAL	GGHS CHAK NO 683/24	GOVERNMENT GIRLS HIGH SCHOOL	High School	Girls	HAND and ELECTRIC	YES
	PIRMAHAL	GBHS CHAK NO 674/22	GOVERNMENT BOYS HIGH SCHOOL	High School	Boys	HAND and ELECTRIC	YES
	TOBA TEK SINGH	GGES CHAK NO 330 JB	GOVERNMENT GIRLS ELEMTRY SCHOOL	Elementary	Girls	HAND and ELECTRIC	YES
	TOBA TEK SINGH	GGHS CHAK NO 351 GB	GOVERNMENT GIRLS HIGH SCHOOL	High School	Girls	HAND and ELECTRIC	YES
	TOBA TEK SINGH	GBPS CHAK NO 351 GB	GOVERNMENT BOYS PRIMERY SCHOOL	Primary	Boys	HAND and ELECTRIC	YES
	TOBA TEK SINGH	GGHS CHAK NO 294 GB IBBAN	GOVERNMENT GIRLS HIGH SCHOOL	High School	Girls	HAND and ELECTRIC	YES
	TOBA TEK SINGH	GBPS CHAK NO 282 JB SAYYAD MAHMOOD	GOVERNMENT BOYS PRIMERY SCHOOL	Primary	Boys	HAND and ELECTRIC	YES
	TOBA TEK SINGH	GBHS CHAK NO 289 CHANDOWATALA	GOVERNMENT BOYS HIGH SCHOOL	High School	Boys	HAND and ELECTRIC	YES
	TOBA TEK SINGH	GGHS CHAK NO 289 CHANDOWATALA	GOVERNMENT GIRLS HIGH SCHOOL	High School	Girls	HAND and ELECTRIC	YES
	TOBA TEK SINGH	GBPS CHAK NO 153 BALAGHRAN	GOVERNMENT BOYS PRIMERY SCHOOL	Primary	Boys	HAND and ELECTRIC	YES
	TOBA TEK SINGH	GGPS CHAK NO 153 GB BALAGHRAN	GOVERNMENT GIRLS PRIMERY SCHOOL	Primary	Girls	HAND and ELECTRIC	YES
	TOBA TEK SINGH	GGHS CHAK NO 153 BALAGHRAN	GOVERNMENT GIRLS HIGH SCHOOL	High School	Girls	HAND and ELECTRIC	YES



	TOBA TEK SINGH	GBPS CHAK NO 298 (SHORKOT CANTT ROAD)	GOVERNMENT BOYS PRIMERY SCHOOL	Primary	Boys	HAND and ELECTRIC	YES
	TOBA TEK SINGH	GBHHS CHAK NO 346 GB	GOVERNMENT BOYS HIGH SCHOOL	High School	Boys	HAND and ELECTRIC	YES
	TOBA TEK SINGH	GGHS CHAK NO 346 GB	GOVERNMENT GIRLS HIGH SCHOOL	High School	Girls	HAND and ELECTRIC	YES
	TOBA TEK SINGH	GBPS CHAK NO 402 VIRKAN	GOVERNMENT BOYS PRIMERY SCHOOL	Primary	Boys	HAND and ELECTRIC	YES
	TOBA TEK SINGH	GGEES CCHAAK NO 402 VIRKAN	GOVERNMENT GIRLS ELEMTRY SCHOOL	Elementary	Girls	HAND and ELECTRIC	YES
	TOBA TEK SINGH	GGHS CHAK NO 343 JARAHAN	GOVERNMENT GIRLS HIGH SCHOOL	High School	Girls	HAND and ELECTRIC	YES
	TOBA TEK SINGH	GBHS CHAK NO 343 GB JARAHAN	GOVERNMENT BOYS HIGH SCHOOL	High School	Boys	HAND and ELECTRIC	YES
	TOBA TEK SINGH	GBHS CHAK NO 340 GB	GOVERNMENT BOYS HIGH SCHOOL	High School	Boys	HAND and ELECTRIC	YES
	TOBA TEK SINGH	GGHS CHAK NO 340 GB	GOVERNMENT GIRLS HIGH SCHOOL	High School	Girls	HAND and ELECTRIC	YES
	TOBA TEK SINGH	GGHS CHAK NO 335 GB AZAFI ABADI	GOVERNMENT GIRLS HIGH SCHOOL	High School	Girls	HAND and ELECTRIC	YES
	TOBA TEK SINGH	GBPS CHAK NO 335 GB	GOVERNMENT BOYS PRIMERY SCHOOL	Primary	Boys	HAND and ELECTRIC	YES
	TOBA TEK SINGH	CHAK NO 337 GB DHOLAN	GOVERNMENT BOYS HIGH SCHOOL	High School	Boys	HAND and ELECTRIC	YES
	TOBA TEK SINGH	GGPS CHAK NO351 JANJOAKOT	GOVERNMENT GIRLS PRIMERY SCHOOL	Primary	Girls	HAND and ELECTRIC	YES
	PIRMAHAL	ABU BAKAIR MADRISA 685/26	MEDRISA	Madrassa	Boys	HAND and ELECTRIC	YES
	PIRMAHAL	GBHS CHAK NO 333 FAREEDABAD	GOVERNMENT BOYS HIGH SCHOOL	High School	Boys	HAND and ELECTRIC	YES
	PIRMAHAL	GGHS CHAK NO 333 FAREEDABAD	GOVERNMENT GIRLS PRIMERY SCHOOL	Primary	Girls	HAND and ELECTRIC	YES
	PIRMAHAL	GGPS CHAK NO 332 GB BAJRA AZAFI ABADI (2)	GOVERNMENT GIRLS PRIMERY SCHOOL	Primary	Girls	HAND and ELECTRIC	YES
	PIRMAHAL	GGHS CHAK NO 332	GOVERNMENT GIRLS HIGH SCHOOL	High School	Girls	HAND and ELECTRIC	YES
	PIRMAHAL	GBPS CHAK NO 332 AZAFI ABADI (1)	GOVERNMENT BOYS ELEMTRY SCHOOL	Elementary	Boys	HAND and ELECTRIC	YES
	PIRMAHAL	GBES CHAK NO 333 FAREEDABAD	GOVERNMENT BOYS ELEMTRY SCHOOL	Elementary	Boys	HAND and ELECTRIC	YES
	TOBA TEK SINGH	GBPS CHAK NO 339 GB CHOTA PAMMI PURA	GOVERNMENT BOYS PRIMERY SCHOOL	Primary	Boys	HAND and ELECTRIC	YES
	TOBA TEK SINGH	GGHS CHAK NO 336 GB SARABA	GOVERNMENT GIRLS HIGH SCHOOL	High School	Girls	HAND and ELECTRIC	YES
	TOBA TEK SINGH	GBPS CHAK NO 339 GB BARA PAMMI PURA	GOVERNMENT BOYS PRIMERY SCHOOL	Primary	Boys	HAND and ELECTRIC	YES
	TOBA TEK SINGH	GGHS CHAK NO 342 CHOR WALA	GOVERNMENT GIRLS HIGH SCHOOL	High School	Girls	HAND and ELECTRIC	YES
	TOBA TEK SINGH	GGHS CHAK NO 302 GB	GOVERNMENT GIRLS HIGH SCHOOL	High School	Girls	HAND and ELECTRIC	YES
	TOBA TEK SINGH	GGJAFRIA HIGH SCHOOL TOBA MARKAZ	GOVERNMENT GIRLS HIGH SCHOOL	High School	Girls	HAND and ELECTRIC	YES
	TOBA TEK SINGH	GGHS CHAK NO 295 GB BARIYANWALA	GOVERNMENT GIRLS HIGH SCHOOL	High School	Girls	HAND and ELECTRIC	YES
	TOBA TEK SINGH	GGPS CHAK NO 295 GB BARIYANWALA	GOVERNMENT GIRLS PRIMERY SCHOOL	Primary	Girls	HAND and ELECTRIC	YES
	TOBA TEK SINGH	GBPS CHAK NO 295 GB PASRIYANWALA	GOVERNMENT BOYS PRIMERY SCHOOL	Primary	Boys	HAND and ELECTRIC	YES
	TOBA TEK SINGH	GGPS CHAK NO 302 GB BHATTI CHAK	GOVERNMENT GIRLS PRIMERY SCHOOL	Primary	Girls	HAND and ELECTRIC	YES
61	TOBA TEK SINGH	GGHS CHAK NO 316 GB	GOVERNMENT GIRLS HIGH SCHOOL	High School	Girls	HAND and ELECTRIC	YES
62	TOBA TEK SINGH	GBPS CHAK NO 316 GB	GOVERNMENT BOYS PRIMERY SCHOOL	Primary	Boys	HAND and ELECTRIC	YES
63	TOBA TEK SINGH	GBPS CHAK NO 304	GOVERNMENT BOYS PRIMERY SCHOOL	Primary	Boys	HAND and ELECTRIC	YES
64	SANDILYANWALI	GBHS SANDILYANWALI MARKAZ	GOVERNMENT BOYS HIGH SCHOOL	High School	Boys	HAND and ELECTRIC	YES
65	SANDILYANWALI	GBHS HIGH PORTION SANDILAYANWALI MARKAZ	GOVERNMENT BOYS HIGH SCHOOL	High School	Boys	HAND and ELECTRIC	YES
66	SANDILYANWALI	GBHS PRIMRY PORTION SANDILYANWALI MARKAZ	GOVERNMENT BOYS HIGH SCHOOL	High School	Boys	HAND and ELECTRIC	YES
67	SANDILYANWALI	GGHS SANDILYANWALI MAKKAZ	GOVERNMENT GIRLS HIGH SCHOOL	High School	Girls	HAND and ELECTRIC	YES
68	TOBA TEK SINGH	GGPS CHAK NO 315 GB	GOVERNMENT GIRLS PRIMERY SCHOOL	Primary	Girls	HAND and ELECTRIC	YES
69	TOBA TEK SINGH	GBHS CHAK NO 313 GB	GOVERNMENT BOYS HIGH SCHOOL	High School	Boys	HAND and ELECTRIC	YES
70	SHORKOT CANTT	GBPS CHAK NO 328 GB	GOVERNMENT BOYS PRIMERY SCHOOL	Primary	Boys	HAND and ELECTRIC	YES
71	TOBA TEK SINGH	GBPS CHAK NO 304 GB	GOVERNMENT BOYS PRIMERY SCHOOL	Primary	Boys	HAND and ELECTRIC	YES
72	LEYAH	FETAPUR GBES 114 2.OKUL	GOVERNMENT BOYS ELEMTRY SCHOOL	Elementary	Boys	HAND and ELECTRIC	YES
73	LEYAH	FETAPUR 94 TDA GPS	GOVERNMENT PRIMERY SCHOOL	Primary	Mixed Gender	HAND and ELECTRIC	YES
74	LEYAH	FETAPUR 101 GPS	GOVERNMENT PRIMERY SCHOOL	Primary	Mixed Gender	HAND and ELECTRIC	YES
75	LEYAH	FETAPUR 105 GBMS	GOVERNMENT BOYS MIDDLE SCHOOL	Middle	Boys	HAND and ELECTRIC	YES
76	LEYAH	FETAPUR 111 GOVT	GOVERNMENT BOYS	Elementary	Boys	HAND and ELECTRIC	YES





## *FINANCIAL HIGHLIGHTS OF 'CLEAN WATER' PROGRAM*

*We spent PKRs15.6 million during the year installing clean water facilities.*

Donations for this program came from both local and overseas donors who liked and supported our program.

We raised a total of PKRs16.2m in donations during the year.

Donations received for this program are treated as donations to a restricted fund.

<b>Movement on 'Clean Water Fund' During YE June 30,2021</b>	
	<b>PKRs</b>
Balance as at July 1,2020	<b>653,774</b>
Contributions Received During The Year	<b>16,280,851</b>
	<b>16,934,625</b>
LESS:Disbursements During The Year	<b>15,625,100</b>
Balance as at June 30,2021	<b>1,309,525</b>

# 'Destitute Families Support' Program

*We supported 2 students with scholarships for tuition fees and college expenses*

One of the scholarship recipient was a girl attending her Bachelor's Degree program in Lahore and the other was a boy attending a primary school.

*During the year we provided monthly food rations to a family of four*

## FINANCIAL HIGHLIGHTS OF 'DESTITUTE FAMILIES SUPPORT' PROGRAM

*We spent PKRs163,388 during the year supporting destitute families.  
We raised PKRs39,736 in donations during the year for this program.*

*Donations received for this program are treated as donations to a restricted fund.*

Movement on 'Destitute Families Support' During YE June 30,2021	
	PKRs
Balance as at July 1,2020	69,905
Contributions Received During The Year	39,736
	109,641
LESS:Disbursements During The Year	88,888
Balance as at June 30,2021	20,753

# 'OTHER CHARITABLE ACTIVITIES'

*During the year, we carried out following activities;*

---

## *RAMADAN FOOD PACKAGES*

---

*We distributed food packages (rations) to 150 needy families during the month of Ramadan.*





Toba Tek Singh



Toba Tek Singh

## RAMADAN IFTARS and COOKED MEALS

*We served 3000 Iftar meals during Ramadan .*



Toba Tek Singh



Lahore Boys 2 Hall of Residence



## EID GIFTS for the CHILDREN

*We distributed Eid Gift Packs to 150 children from under-privileged families in rural areas.*



Toba Tek Singh



## EID-UL-ADHA QURBANI MEAT DISTRIBUTION

*On the occasion of Eid-ul-Adha we were able to spend do 10 Qurban is whose meat was distributed to over 200 poor families in areas around our halls of residence.*



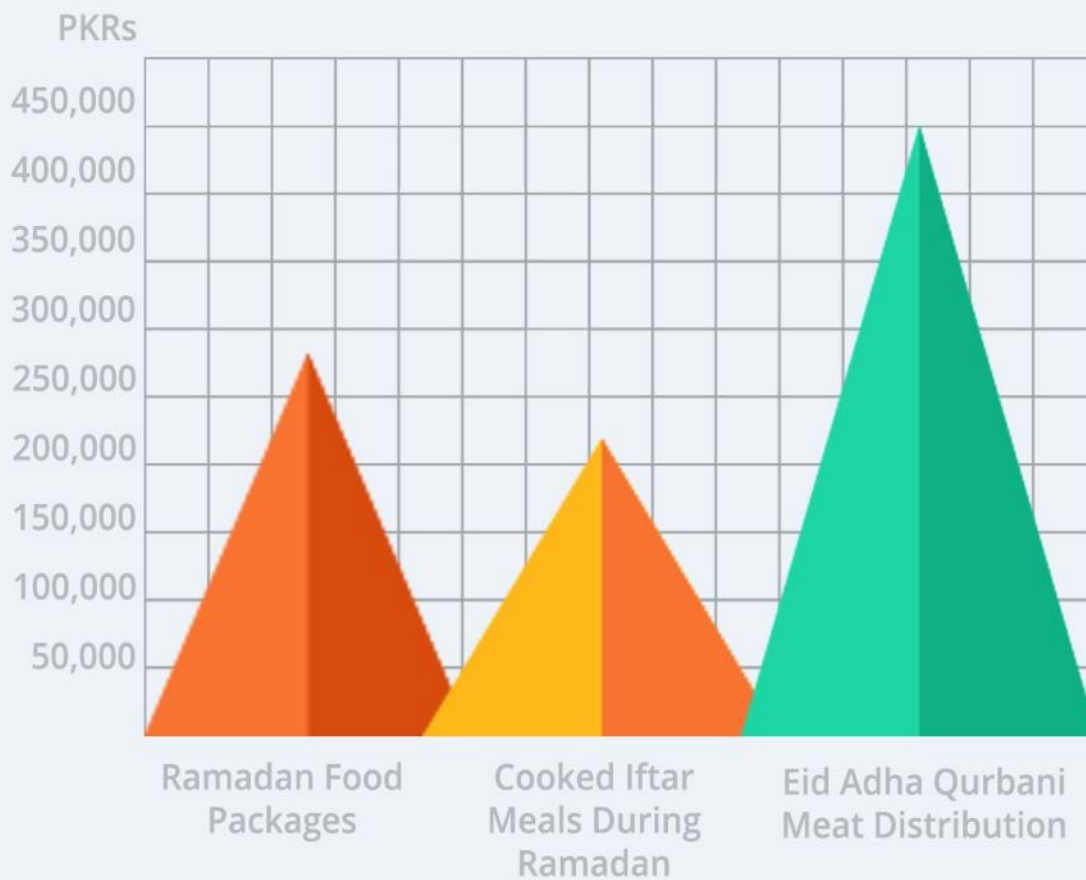
## FINANCIAL HIGHLIGHTS OF 'OTHER CHARITABLE ACTIVITIES'

*We spent a total of PKRs940,668 on these charitable activities.*

*We raised a total of PKRs1,514,450 in donations during the year for these activities.*

*Expenditures on these charitable activities were made from donations received in our Sudqa Khairat Zakat Fund, which a restricted fund.*

### Amount Spends for Other Charitable Activities





Toba Boys 2 Hall of Residence



## FINANCIAL HIGHLIGHTS FROM HAMIDIYE FOUNDATION AUDITED ACCOUNTS FOR YEAR ENDED JUNE 30, 2021

### INCOME

Our total income for the year (donations) amounted to **PKRs 55,650,838**, made up as follows;

<b>Donations</b>	<b>54,950,838</b>
<b>Income from Fund Raising Activities</b>	<b>700,000</b>

### *Donations Received during the Year*

Hamidiye Foundation raised a total of **PKRs 54,950,838** in donations. Of this **9%** was from local Pakistani donors and **91%** from donors based abroad.

**4%** of these donations were for General Fund and **96%** for Restricted Funds.

Of total donations received, [39%] was from the public and [61%] from partners who had committed to support our operations under contractual arrangements.

### Donation Raised During Year Ended June 30, 2021

UnRestricted Fund	General Fund	
		2,275,078 PKRs
	Destitute Family Fund	39,736 PKRs
	Hostel Operations	34,030,223 PKRs
	Student Welfare Fund	198,000 PKRs
	CW Fund	16,280,181 PKRs
	D Fund	814,450 PKRs
	Endow Edu Fund	1,352,500 PKRs
Restricted Fund		

**TOTAL: 54,959,838**

Although, through our fund raising campaigns we aim to raise funds for our 'general fund' that gives us freedom to use them for charitable purposes as we deem fit, most of our donors and partners prefer to donate for specific projects that we implement. Donations received for those specific purposes (restricted funds) cannot be used for any purpose other than for which it was given.

### Accounting Treatment of Donations to a Restricted Fund

Donations received for this program (a restricted fund) are taken directly to "reserves" and shown in the statement of financial position. Only such amount is recognized as income in any year and is transferred from reserves to "income and expenditure account" that was spent in that year in accordance with the terms of respective program/project/fund to which it relates. The balance is shown under reserves in the statement of financial position.

#### EXPENDITURES

### Administration Costs

We spent a total of PKRs **3,044,615** on trust administration expenses for the year, made up as follows;

Staff Related Costs	
Rent Rates & Utilities	
Professional Fees	2,059,000
Other Costs	273,504
	270,250
	<b>441,861</b>

***Our administration costs amounted to [7%] of our total expenditures.***

### Project Expenditures

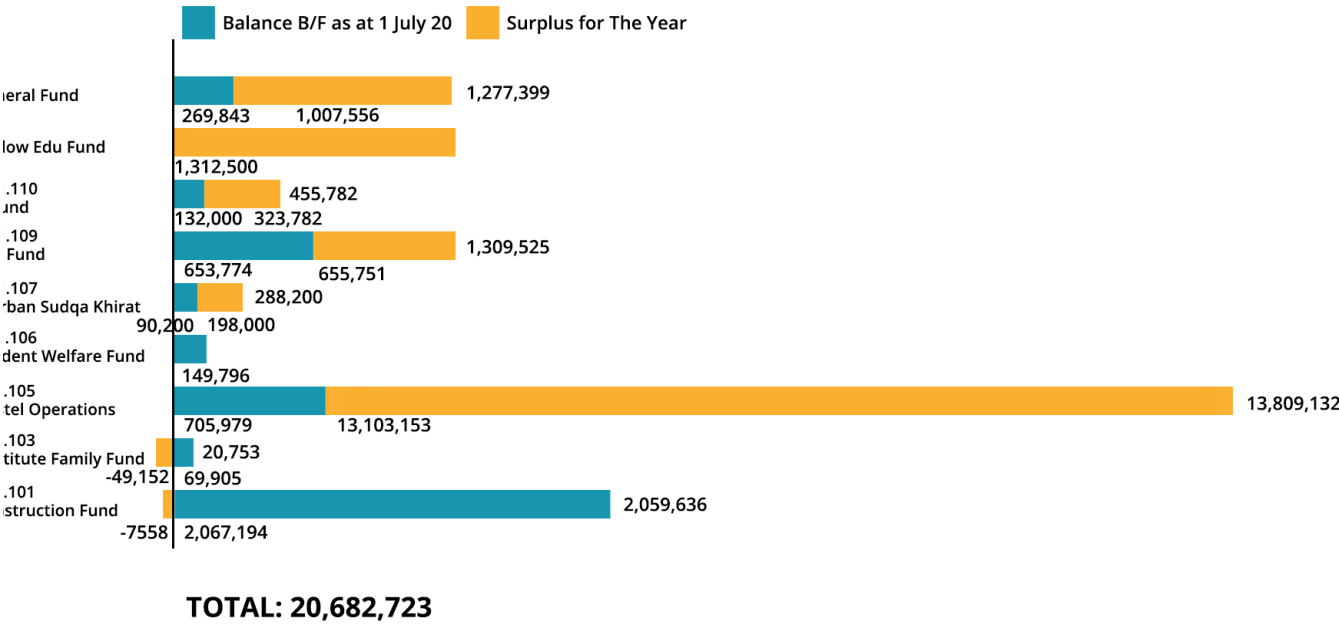
We spent a total of PKRs[37,686,465] implementing our projects and activities, made up as follows;

Halls of Residence	
Clean Water	20,957,309
Destitute Families Support	15,625,100
Qurbani Eid ul Adha	88,888
Ramadan Food	450,000
Eid Gifts for the Children	285,403
Grants to Other Charities	205,265
	74,500

RESERVES

As at the year end, our reserves totaled PKRs [20,682,723], made up as follows;

RETAINED SURPLUSES



**HAMIDIYE FOUNDATION**  
**STATEMENT OF FINANCIAL POSITION**  
**AS AT JUNE 30, 2021**

	Note	2021 Rupees	2020 Rupees
<b>ASSETS</b>			
<b>NON-CURRENT ASSETS</b>			
Property and equipments	4	12,190,838	2,876,706
<b>CURRENT ASSETS</b>			
Deposits and prepayments	5	2,306,086	1,135,700
Cash and bank balances	6	9,164,642	1,230,140
		11,470,728	2,365,840
		<u>23,661,566</u>	<u>5,242,546</u>
<b>LIABILITIES</b>			
<b>CURRENT LIABILITIES</b>			
Accrued liabilities	7	3,129,992	1,029,425
Provision for taxation		236,862	74,431
		<u>3,366,854</u>	<u>1,103,856</u>
<b>NET ASSETS</b>		<u>20,294,712</u>	<u>4,138,690</u>
<b>REPRESENTED BY:</b>			
<b>FUNDS</b>			
General fund		1,145,276	269,842
Restricted funds		19,149,436	3,868,848
	8	<u>20,294,712</u>	<u>4,138,690</u>

*The annexed notes from 1 to 13 form an integral part of these financial statements.*

  
Trustee



  
Trustee



**HAMIDIYE FOUNDATION**  
**STATEMENT OF INCOME AND EXPENDITURE**  
**FOR THE YEAR ENDED JUNE 30, 2021**

	Note	2021 Rupees	2020 Rupees
<b>INCOME</b>			
Income	9	42,002,083	12,305,008
<b>EXPENSES</b>			
Operating expenses	10	(3,494,615)	(924,853)
Project expenses	11	(37,395,172)	(10,942,326)
		(40,889,787)	(11,867,179)
Surplus for the year before taxation		1,112,296	437,829
Provision for taxation - current tax		(236,862)	(74,431)
Surplus for the year		875,434	363,398

*The annexed notes from 1 to 13 form an integral part of these financial statements.*

  
Trustee



  
Trustee

**HAMIDIYE FOUNDATION**  
**NOTES TO THE FINANCIAL STATEMENTS**  
**FOR THE YEAR ENDED JUNE 30, 2021**

<b>4 PROPERTY AND EQUIPMENTS</b>		Note	2021	2020	
		4.1	Rupees	Rupees	
Operating fixed assets			11,365,838	2,051,706	
Advance for purchase of land			825,000	825,000	
			<u>12,190,838</u>	<u>2,876,706</u>	
<b>4.1 Operating fixed assets</b>					
Description	Land	Furniture and fixtures	Electrical equipments	Vehicles	Total
	-----Rupees-----				
<b>Cost</b>					
Balance as at July 01, 2019	-	-	-	-	-
Additions during the year	952,000	1,280,540	-	-	2,232,540
Balance as at June 30, 2020	952,000	1,280,540	-	-	2,232,540
<b>Accumulated depreciation</b>					
Balance as at July 01, 2019	-	-	-	-	-
Charged for the year	-	180,834	-	-	180,834
Balance as at June 30, 2020	-	180,834	-	-	180,834
<b>W.D.V. as at June 30, 2020</b>	<u>952,000</u>	<u>1,099,706</u>	<u>-</u>	<u>-</u>	<u>2,051,706</u>
<b>Cost</b>					
Balance as at July 01, 2020	952,000	1,280,540	-	-	2,232,540
Additions during the year	-	3,363,644	3,556,745	4,131,970	11,052,359
Balance as at June 30, 2021	952,000	4,644,184	3,556,745	4,131,970	13,284,899
<b>Accumulated depreciation</b>					
Balance as at July 01, 2020	-	180,834	-	-	180,834
Charged for the year	-	867,187	456,014	415,026	1,738,227
Balance as at June 30, 2021	-	1,048,021	456,014	415,026	1,919,061
<b>W.D.V. as at June 30, 2021</b>	<u>952,000</u>	<u>3,596,163</u>	<u>3,100,731</u>	<u>3,716,944</u>	<u>11,365,838</u>
<b>Useful life (years)</b>		4	4	4	
<b>5 DEPOSITS AND PREPAYMENTS</b>			2021	2020	
			Rupees	Rupees	
Security deposits			2,146,086	1,135,700	
Prepayments			160,000	-	
			<u>2,306,086</u>	<u>1,135,700</u>	
<b>6 CASH AND BANK BALANCES</b>					
Cash in hand			58,713	41,638	
Cash at bank in current accounts			9,105,929	1,188,502	
			<u>9,164,642</u>	<u>1,230,140</u>	
<b>7 ACCRUED LIABILITIES</b>					
Audit fees payable			115,000	94,875	
Salaries payable			938,500	110,190	
Utility bills payable			272,390	3,660	
Rent payable			1,708,848	820,700	
Withholding tax payable			95,254	-	
			<u>3,129,992</u>	<u>1,029,425</u>	



**HAMIDIYE FOUNDATION**  
**NOTES TO THE FINANCIAL STATEMENTS**  
**FOR THE YEAR ENDED JUNE 30, 2021**

8	FUNDS	Total	Unrestricted Fund		Restricted Funds									
			General Fund	Sub total	Construction Fund	Destitute Families	Disaster Relief Fund	Hostel Operations	Student Welfare Fund	Student Welfare Fund	Sudqa Fund	Water, Wells Project	Zakat Fund	
	Balance as at July 01, 2019	3,033,284	(93,556)	3,126,840	2,067,194	-	-	-	149,796	-	-	-	909,850	-
	Income during the period	12,576,077	1,909,939	10,666,138	-	120,985	-	4,874,328	-	-	90,200	-	5,448,625	132,000
	Fund management fee	470,939	470,939	-	-	-	-	-	-	-	-	-	-	-
	Subtotal	16,080,300	2,287,322	13,792,978	2,067,194	120,985	-	4,874,328	149,796	-	90,200	-	6,358,475	132,000
	Disbursements during the period													
	For restricted funds - charged to income													
	- Expenses incurred	(10,942,326)	-	(10,942,326)	-	(51,080)	(1,018,196)	(4,168,349)	-	-	-	-	(5,704,701)	-
	For unrestricted funds - charged to income	(999,284)	(999,284)	-	-	-	-	-	-	-	-	-	-	-
	Subtotal	(11,941,610)	(999,284)	(10,942,326)	-	(51,080)	(1,018,196)	(4,168,349)	-	-	-	-	(5,704,701)	-
	Inter-fund transfers during the year													
	Subtotal	-	(1,018,196)	1,018,196	-	-	1,018,196	-	-	-	-	-	-	-
	Balance as at June 30, 2020	4,138,690	269,842	3,868,848	2,067,194	69,905	-	705,979	149,796	-	90,200	-	653,774	132,000
	Income during the year	4,138,690	269,842	3,868,848	2,067,194	69,905	-	705,979	149,796	-	90,200	-	653,774	132,000
	Contributions received during the year	55,650,838	2,975,078	52,675,760	-	39,736	-	34,030,223	-	1,312,500	198,000	-	16,280,851	814,450
	Fund management fee	1,631,833	1,631,833	-	-	-	-	-	-	-	-	-	-	-
	Subtotal	61,421,361	4,876,753	56,544,608	2,067,194	109,641	-	34,736,202	149,796	1,312,500	288,200	-	16,934,625	946,450
	Disbursements during the year													
	For restricted funds - charge to income	(37,395,172)	-	(37,395,172)	(158,708)	(88,888)	-	(21,031,808)	-	-	-	-	(15,625,100)	(490,668)
	- Expenses incurred	(3,731,477)	(3,731,477)	-	-	-	-	-	-	-	-	-	-	-
	For unrestricted funds	(41,126,649)	(3,731,477)	(37,395,172)	(158,708)	(88,888)	-	(21,031,808)	-	-	-	-	(15,625,100)	(490,668)
	Subtotal	20,294,712	1,145,276	19,149,436	1,908,486	20,753	-	13,704,394	149,796	1,312,500	288,200	-	1,309,525	455,782



**HAMIDIYE FOUNDATION**  
**NOTES TO THE FINANCIAL STATEMENTS**  
**FOR THE YEAR ENDED JUNE 30, 2021**

<b>9 INCOME</b>				
		Note	2021	2020
			Rupees	Rupees
Income from restricted funds		8	37,395,172	10,942,326
Unrestricted donations			2,975,078	891,743
Fund management fee			1,631,833	470,939
			<u>42,002,083</u>	<u>12,305,008</u>
<b>10 OPERATING EXPENSES</b>				
Salaries			2,059,000	110,190
Depreciation			29,240	-
Utilities			262,486	210,061
Bank charges			196,042	77,227
Repair and maintenance			85,797	-
Auditors' remuneration		10.1	270,250	252,375
Legal and professional			10,000	275,000
Donations			450,000	-
Miscellaneous			131,800	-
			<u>3,494,615</u>	<u>924,853</u>
<b>10.1 Auditors' remuneration</b>				
Audit services			115,000	94,500
Taxation services			155,250	-
			<u>270,250</u>	<u>94,500</u>
<b>11 PROJECT EXPENSES</b>				
Destitute Families Program			88,888	51,080
Hostel Operations Expenditures			21,031,808	4,168,349
Water wells Fund - Clean Water project			15,625,100	5,704,701
Disaster Relief Program			-	1,018,196
Construction Fund			158,708	-
Zakat Fund			490,668	-
			<u>37,395,172</u>	<u>10,942,326</u>

**12 DATE OF AUTHORIZATION FOR ISSUE**

These financial statements have been authorized for issue by the Board of Trustees of the Foundation on 04 MAR 2022

**13 GENERAL**

Figures have been rounded off to the nearest Pakistani Rupee.

  
Trustee



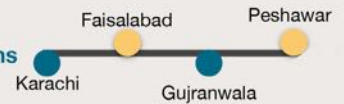
  
Trustee

# ONE YEAR DEVELOPMENT PLAN



- Start construction of our own custom designed boarding institution in Lahore

- Establish at least four more Boarding Institutions in different cities



- Offer placements to at least 800 students in our Boarding Institutions

- Recruit qualified and experienced Teachers who can act as Mentors to students and support student's educational endeavors



## CONSTRUCTION PROJECT



**We shall be building a purpose built institution in Lahore.**

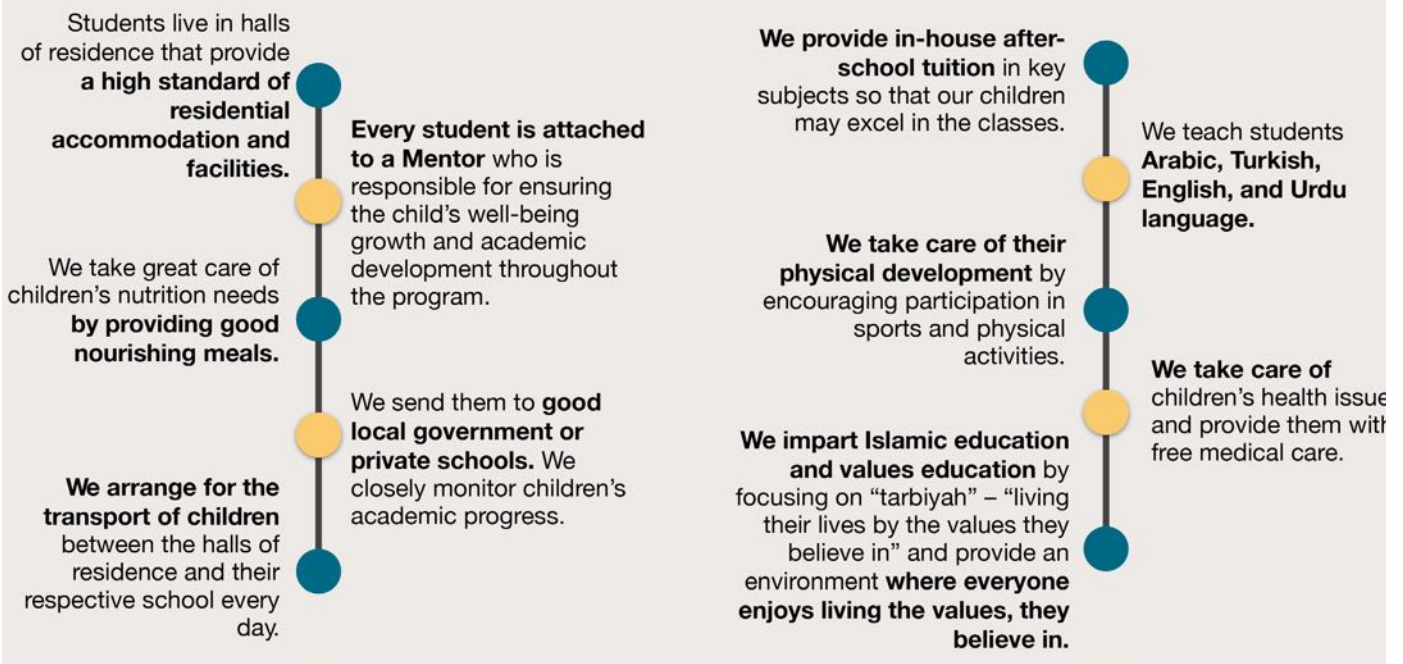
The building is designed by Turkish architects and the construction will start in 2021.

The building will include classrooms, a prayer room, a computer room, in-house cinema and conference room, gym, dormitories, a dining hall, canteen and a roof garden and will accommodate 80 resident students.

- Size of Building in Sq Feet: 19908
- Number of Floors: 5
- Plot Size: 9000 sq feet
- Start Date: July 2021
- Completion Date: July 2022
- Expected Project Cost: \$450 000
- Location: Lahore

# INTRODUCING OUR HALLS OF RESIDENCE

## HOW DOES OUR HALLS OF RESIDENCE PROGRAM WORK?



Our halls of residence model provides a clean and comfortable living environment that is conducive to learning and studying, where students get healthy and nourishing food, receive afterschool tuition, get the opportunity to learn foreign languages, play sports, have access to healthy entertainment, learn about Islam, and live their lives by Islamic values. There are 7 Halls of Residence of Hamidiye Foundation. There are +200 students in this halls of residence.

## *HIFZUL QURAN PROGRAM*

With the Ottoman style memorizing method, students are able to memorize Our'an e Kareem in 2 years including preparation.

This program is for middle school students who want to spend first two years doing Hifz-e-Quran and preparing for high school studies, before enrolling in an external high school for Matriculation exams.



---

## ***HALL OF RESIDENCE FOR BOYS - ISLAMABAD***

---

Main Double Road House No:12 Sector G-15/4 Islamabad

Islamabad hall of residence for Boys is a 29 student residential facility. It is situated in sector G15 Islamabad. Currently this hall is operating at full capacity. There were 29 students residing at the year end.

This hall of residence is managed by a team of five staff members of which three are professional teachers and rest are management and support staff.





---

## ***HALL OF RESIDENCE FOR BOYS 1 – TOBA TEK SINGH***

---

Chak No: 330 GB, Siowal Toba Tek Singh

Toba Boys-1 hall of residence for Boys is a 60 student residential facility. It is situated in Chak 330 GB Toba Tek Singh. Currently this hall is operating at %60 capacity. There were 38 students residing at the year end.

This hall of residence is managed by a team of five staff members of which three are professional teachers and rest are management and support staff.





---

## ***HALL OF RESIDENCE FOR BOYS - AT VALENCIA TOWN, LAHORE***

---

47 G Block, Valencia Town, Lahore

Valencia Town of residence for Boys is a 30 student residential facility. It is situated in Valencia Town Lahore. Currently this hall is operating at full capacity. There were 30 students residing at the year end.

This hall of residence is managed by a team of five staff members of which three are professional teachers and rest are management and support staff.



---

## ***SECULAR EDUCATION PROGRAM***

---

The main purpose of our educational program is to awaken and explore this potential and help each student finds purpose and direction in life.

Our aim is to ensure that every student is equipped with the tools to succeed in every area of life and grow up to be purehearted Muslims with good sense that serve humanity.

## *HALL OF RESIDENCE FOR BOYS 2 - TOBA TEK SINGH*



House No:22, Revinue Housing Colony, Jhang Road, Toba Tek Singh

Toba Boys-2 hall of residence for Boys is a 30 student residential facility. It is situated in Revinue Housing Colony Toba Tek Singh. Currently this hall is operating at full capacity. There were 30 students residing at the year end.



## *HALL OF RESIDENCE FOR BOYS 1 - AT JOHAR TOWN, LAHORE*



House No 65, Block F Phase 1 Johar Town, Lahore,

Lahore boys- hall of residence for boys is a 30 student residential facility. It is situated in Johar Town Society Lahore. Currently this hall is operating at %90 capacity. There were 27 students residing at the year end.

This hall of residence is managed by a team of six staff members of which three are professional teachers and rest are management and support staff.





## ***HALL OF RESIDENCE FOR BOYS 2 - AT JOHAR TOWN, LAHORE***

House No:1048, Block E1, Johar Town, Lahore

Lahore boys hall of residence for boys is a 30 student residential facility. It is situated in Johar Town Lahore. Currently this hall is operating at %90 capacity. There were 27 students residing at the year end.

This hall of residence is managed by a team of five staff members of which three are professional teachers and rest are management and support staff.





---

## ***HALL OF RESIDENCE FOR GIRLS - ARCHITECTS SOCIETY, LAHORE***

---

House No:106 B, Architect Society, Lahore

Lahore Girls- hall of residence for Girls is a 30 student residential facility. It is situated in Architect Society Lahore. Currently this hall is operating at full capacity. There were 30 students residing at the year end.

Our instructors, who are experts in their fields and open to development, strive to meet all the material and moral needs of children. All of our students and teachers live like a family with respect and love for each other.

This hall of residence is managed by a team of five staff members of which three are professional teachers and rest are management and support staff.

“The salvation of a nation is not possible by eliminating the bad, but only possible by educating the youth.”

 (+92) 42 354 1536

 (+92) 315 313 3334

 36, M BLOCK, GULBERG III, LAHORE, PAKISTAN

 [info@hamidiyefoundation.org](mailto:info@hamidiyefoundation.org)

 @HamidiyeFoundation

 @HamidiyeFoundat

 hamidiyefoundation